



SOFTWARECENTRAL

Routine administration, software distribution and PC management made easy

There are great advantages to using Microsoft System Center Configuration Manager 2007 (SCCM) for rolling out and updating servers and clients as well as forming a general view and getting full control of how they are used. On the other hand, SCCM is a complex solution which places great demands on user and administrator skills. SoftwareCentral provides a user-friendly web interface on top of your existing SCCM solution. It enables your organization to handle routine tasks without prior training and allows you to assign a number of support tasks to Helpdesk and software requests to end-users.

What's in it for you?

- User-friendly, so Helpdesk and others in your organization can carry out routine SCCM-tasks
- Frees time for other, more demanding administrator tasks
- More efficient use of Helpdesk time and resources
- Increased user satisfaction and productivity as users decide for themselves what software to install and when
- Controls which software is installed
- ROI of 3-6 months thanks to simple implementation and low operations costs.

MODULES

Administrator module

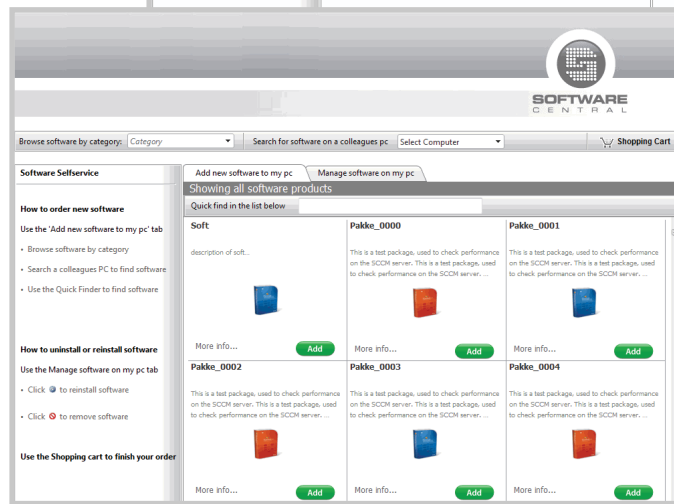
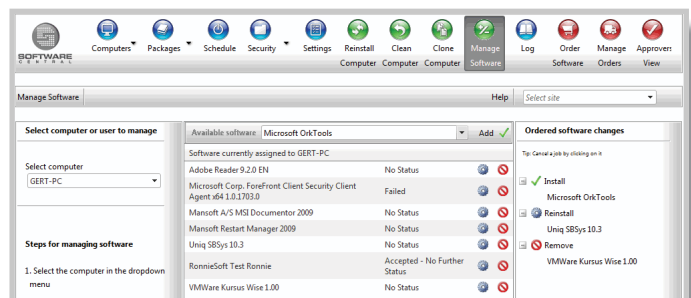
The SCCM administrator handles package creation, computer import, Wake-on-LAN and other tasks which would normally be very time-consuming with SCCM's built-in console.

Support module

Client-related tasks such as software distribution, reinstallation, and cloning of user-PC usually entails contacting the SCCM administrator, as they are complicated to perform using SCCM's built-in console. With SoftwareCentral's Support module, Helpdesk can undertake many of these tasks.

Self-service module

Every day, Helpdesk fields a number of calls with requests for software. SoftwareCentral's Self-service module relieves Helpdesk of these calls as end-users can order software independently



ADMINISTRATOR MODULE

- Package creation and import (MSI, App-V, Exe, Scripts)
- Create and import external computer from CVS-file – full MDT support
- Wake-On-LAN
- Security - delegate rights

SUPPORT MODULE

- Software distribution – add / remove / reinstall software
- Clean computer
- Clone computer
- Reinstall computer
- Replace computer
- Wake-On-LAN

SELF-SERVICE MODULE

- User-requested software
- Rules-based approval process
- Expanded software description
- View installed software at co-workers' PCs and select from them
- Uninstall or reinstall software on own PC



SOFTWARE
CENTRAL

SCCM INTEGRATION

- Web based – runs on top of a MS IIS
- Preserves data integrity – SoftwareCentral is an added GUI-layer on SCCM and stores all data in the SQL database via SCCM WMI calls. Any data used by SoftwareCentral are read directly from the database
- SCCM runs independently of SoftwareCentral – even in a future case where Softwarecentral is not to be used

USER INTERFACE

- Self-explanatory and comprehensible GUI
- Focused on the task at hand and with no SCCM-related expressions
- Step-by-step guides to help the user through all commonly encountered task

INSTALLATION AND SERVICE

- Installed with a MSI package from www.mansoft.dk/downloads
- Standardized solution with quarterly updates and associated hotline

LICENSING

Basis installation

- Administrator module
- Support module

Additional licensing

- Self-service module
- Future modules

SYSTEM REQUIREMENTS

- Microsoft System Center Configuration Manager 2007
- Microsoft Internet Information Server

All SoftwareCentral modules are licensed after the number of users (volume licensing). The license agreement includes an update subscription with associated hotline.

AT A GLANCE

SoftwareCentral is a SCCM web interface which makes a range of administrative and client-related tasks much easier to carry out for administrators, Helpdesks, and end users. Easy installation and a self-explanatory user interface provide a number of immediate advantages:

- Implemented in 1-2 hours
- Usable by all user groups after a one-hour introduction
- ROI of 3-6 months